

# Using Medical Objects: Installing HESA Certificates

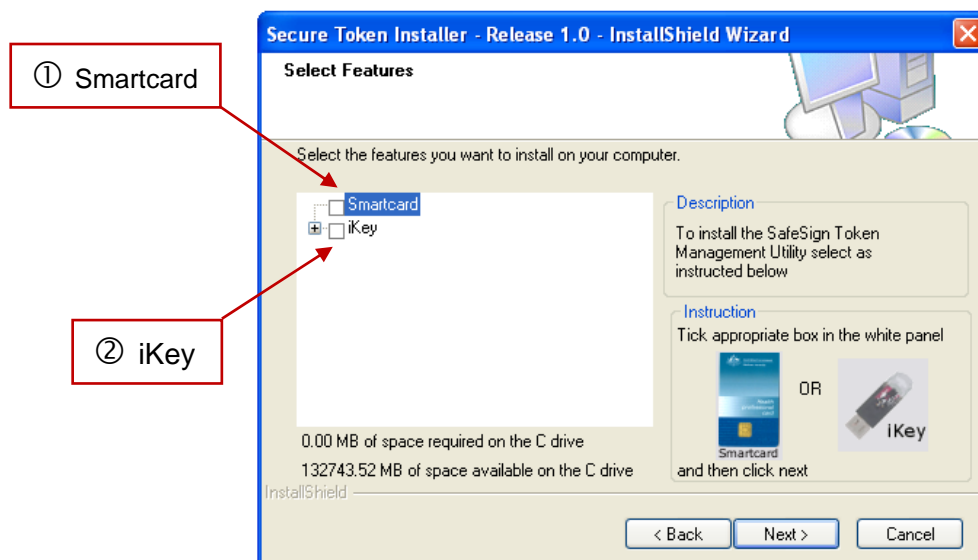
**Please note...**

This needs to be installed on each computer from which the GP wishes to send referrals

1. Firstly, insert the CDrom that arrived with your HESA individual key. You may receive either an iKey or a Smartcard, they both should look like this:

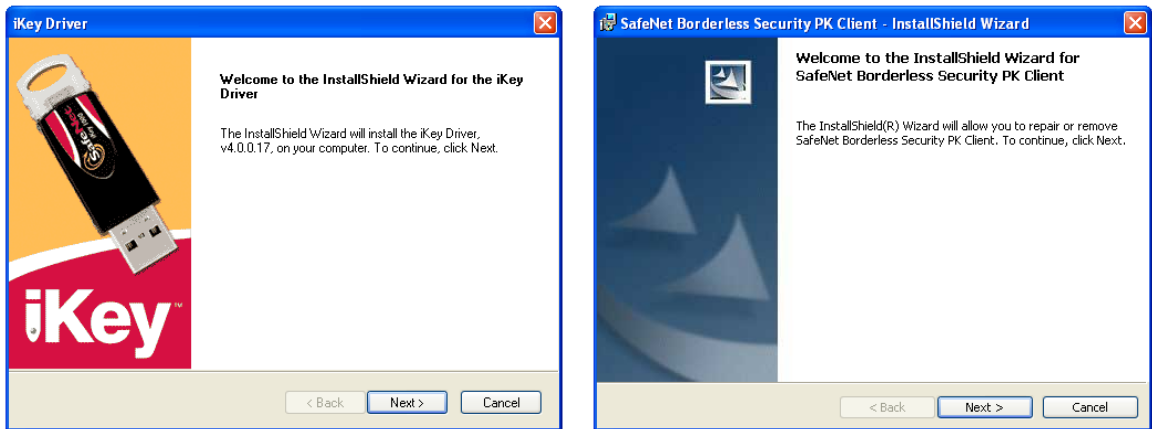


2. Once you have inserted the disk it should autostart, then, click on Next, choose the appropriate HESA key to install (tick Smartcard or iKey) then click Next.

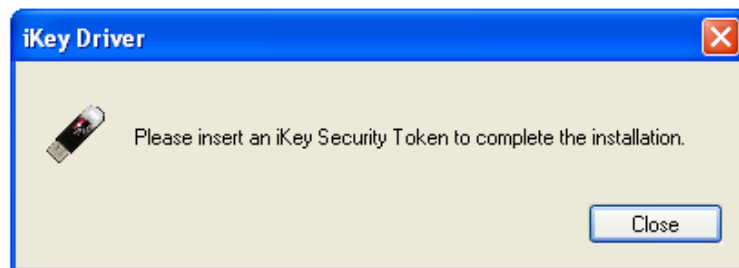


- Next, a series of screens will pop up. These are exactly the same for both the iKey and Smartcard installations. These will install the drivers for the certificates plus a program that the certificates require to work.

Keep clicking the Next button until the installation begins.



- The last step of the driver installation is that to insert your iKey/Smartcard to finalise the installation.



- Once you have inserted your iKey or Smartcard, the window will disappear. Select **Finish** to complete the installation.

